

Camille Saint-Saens
Carnival of the Animals

CONTREBASSE

Introduction

N° 1 et Marche Royale du Lion

Andante maestoso

1^{er} Piano 8^{va}

C. BASSE

p *cresc.*

1

Piano

C. BASSE

All^o non troppo
Piano

ff

2

Più allegro

C. BASSE

ff

3

2^d Piano

4

1^{er} Piano

C. BASSE
pizz

1^{er} Piano

C. BASSE
arco

1^{er} Piano

5

ff

6

ff

4

ff

7

ff

8

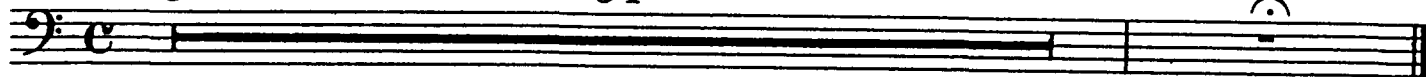
ff

N° 2

Poules et Coqs

Allegro moderato

34



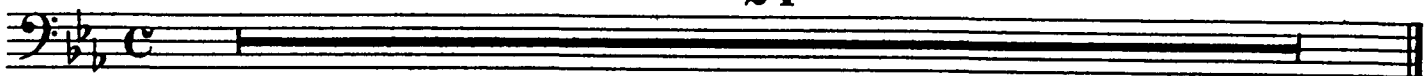
N° 3

Hémiones

(Animaux véloces)

Presto furioso

24



N° 4

Tortues

Andante maestoso

1^{er} Piano

C. BASSE



N° 5

L'Éléphant

Allegretto pomposo

2^d Piano

C. BASSE SOLI



Musical score for Contrabass, measures 1-15. The score is in bass clef with a key signature of two flats (B-flat and E-flat). It begins with a dynamic marking of *mf*. The music consists of five staves of notation. Measure 15 contains a circled number '2' above the staff. Measure 14 contains a circled number '3' above the staff. Measure 13 contains a circled number '4' above the staff. Measure 12 contains a circled number '3' above the staff. Measure 11 contains a circled number '1' above the staff. Measure 10 contains a circled number '2' above the staff. Measure 9 contains a circled number '3' above the staff. Measure 8 contains a circled number '5' above the staff. Measure 7 contains a circled number '3' above the staff. Measure 6 contains a circled number '3' above the staff. Measure 5 contains a circled number '3' above the staff. Measure 4 contains a circled number '3' above the staff. Measure 3 contains a circled number '3' above the staff. Measure 2 contains a circled number '3' above the staff. Measure 1 contains a circled number '3' above the staff. The score includes various musical notations such as slurs, accents, and dynamic markings like *f* and *ff*.

N° 6

Kangourous

Moderato

Musical score for Kangourous, measures 1-6. The score is in bass clef with a key signature of two flats. It begins with a tempo marking of *Moderato*. The music consists of six staves of notation. Measure 1 contains a circled number '3' above the staff. Measure 2 contains a circled number '3' above the staff. Measure 3 contains a circled number '1' above the staff. Measure 4 contains a circled number '3' above the staff. Measure 5 contains a circled number '2' above the staff. Measure 6 contains a circled number '5' above the staff. The score includes various musical notations such as slurs, accents, and dynamic markings like *f* and *ff*.

N° 7

Aquarium

Andantino

39

Musical score for Aquarium, measures 1-39. The score is in bass clef with a key signature of two flats. It begins with a tempo marking of *Andantino*. The music consists of 39 staves of notation. Measure 1 contains a circled number '3' above the staff. Measure 2 contains a circled number '3' above the staff. Measure 3 contains a circled number '1' above the staff. Measure 4 contains a circled number '3' above the staff. Measure 5 contains a circled number '2' above the staff. Measure 6 contains a circled number '5' above the staff. Measure 7 contains a circled number '3' above the staff. The score includes various musical notations such as slurs, accents, and dynamic markings like *f* and *ff*.

N° 8

Personnages à longues oreilles

Tempo ad lib

24

Musical score for Personnages à longues oreilles, measures 1-24. The score is in bass clef with a key signature of two flats. It begins with a tempo marking of *Tempo ad lib*. The music consists of 24 staves of notation. Measure 1 contains a circled number '3' above the staff. Measure 2 contains a circled number '3' above the staff. Measure 3 contains a circled number '1' above the staff. Measure 4 contains a circled number '3' above the staff. Measure 5 contains a circled number '2' above the staff. Measure 6 contains a circled number '5' above the staff. Measure 7 contains a circled number '3' above the staff. The score includes various musical notations such as slurs, accents, and dynamic markings like *f* and *ff*.

N° 9

Le Coucou au fond des bois

Andante

42

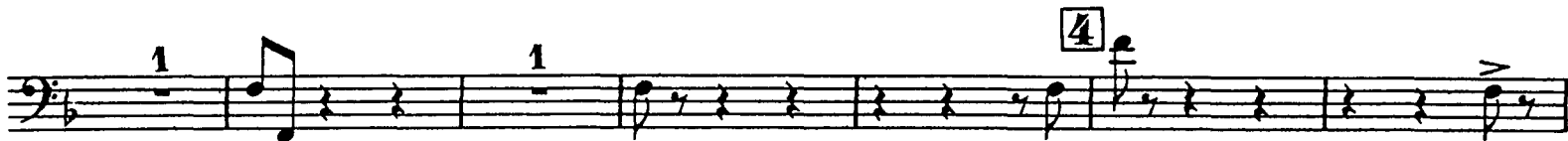
Musical score for Le Coucou au fond des bois, measures 1-42. The score is in bass clef with a key signature of two sharps (F-sharp and C-sharp). It begins with a tempo marking of *Andante*. The music consists of 42 staves of notation. Measure 1 contains a circled number '3' above the staff. Measure 2 contains a circled number '3' above the staff. Measure 3 contains a circled number '1' above the staff. Measure 4 contains a circled number '3' above the staff. Measure 5 contains a circled number '2' above the staff. Measure 6 contains a circled number '5' above the staff. Measure 7 contains a circled number '3' above the staff. The score includes various musical notations such as slurs, accents, and dynamic markings like *f* and *ff*.

CONTREBASSE

N° 10

Volière

Moderato grazioso
pizz



N° 11

Pianistes

Allegro moderato



N° 12

Fossiles

Allegro ridicolo

The musical score for Contrabass in 'Fossiles' consists of ten staves. The first staff begins with a dynamic marking of *ff* and a 2-measure rest. The second staff includes a first ending bracket labeled '1' and a 2-measure rest. The third staff features a *p* dynamic marking and an 'arco' instruction. The fourth staff contains a second ending bracket labeled '2' and a 4-measure rest. The fifth staff has a 2-measure rest, a *ff* dynamic marking, and a 'pizz' instruction. The sixth staff includes a 2-measure rest, an 'arco' instruction, and a 2-measure rest. The seventh staff features a 4-measure rest, a 'Clarinete' instruction, and a 4-measure rest. The eighth staff is marked '5 C. BASSE' and 'pizz', with a *p* dynamic marking and a 6-measure rest. The ninth staff is marked '6 velle' and *ff*. The tenth staff is marked 'C. BASSE' and 'arco', with a *ff* dynamic marking.

N° 13

Le Cygne

Andantino grazioso

28

The musical staff for 'Le Cygne' is in the key of D major (two sharps) and 6/4 time signature. It begins with a 4-measure rest.

N° 14

Final

Molto allegro

Piano

8--,

8--,

8--,

8--,

C. BASSE

1 pizz

2

3 arco

2

3

4

5

6

7

8

9

4

10

11

12

5 pizz

6 arco
f

7 Violon

C. BASSE Piano

C. BASSE *p*

8 *cresc.*

9 *f*

10

ff